

Cardiology

Riley Children's Health

Scheduling Number:

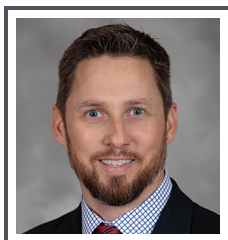
317.944.8906

Fax Number:

317.944.9330



The pediatric heart program at Riley Children's Health is ranked as one of the leading programs in the nation.



Larry W. Markham, MD
Division Chief

CLINICAL INTERESTS:

Adult congenital heart disease
Marfan syndrome
Muscular dystrophy
General pediatric cardiology

LOCATION: RH



Ryan Alexy, MD

CLINICAL INTERESTS:

Interventional cardiac catheterization
Nonsurgical treatment of heart defects
Hybrid surgical/catheter procedures
General pediatric cardiology

LOCATION: RH



Mark Ayers, MD

CLINICAL INTERESTS:

Electrophysiology
Arrhythmias
Pacemakers
Cardiac ablation
General pediatric cardiology

LOCATIONS: RH, DE, FW, MX



Timothy Cordes, MD

CLINICAL INTERESTS:

Transthoracic, transesophageal and fetal echocardiography
Congenital heart disease in adolescents and young adults
General pediatric cardiology

LOCATIONS: RH, MX, FW, APS



Robert Darragh, MD

CLINICAL INTERESTS:

Transthoracic and fetal echocardiography
Heart failure
Mechanical circulatory support
Cardiac transplantation
General pediatric cardiology

LOCATIONS: RH, APS



Anna Deitch, MD

CLINICAL INTERESTS:

Electrophysiology
Arrhythmias
General pediatric cardiology

LOCATIONS: RH, MX



Umesh Dyamenahalli, MD

CLINICAL INTERESTS:

General pediatric cardiology
Cardiac critical care
Adult congenital heart disease
Transthoracic and transesophageal echocardiography

LOCATION: SB



Eric Ebenroth, MD

CLINICAL INTERESTS:

Transthoracic, transesophageal and fetal echocardiography
Exercise physiology and stress testing
General pediatric cardiology

LOCATIONS: RH, MX, APS



Anne Farrell, MD

CLINICAL INTERESTS:

Transthoracic, transesophageal and fetal echocardiography
General pediatric cardiology

LOCATIONS: RH, ROC-BL, MX



Riley Children's Health
Indiana University Health

rileychildrens.org/heart

Riley Cardiology is dedicated to scheduling new patient appointments for referred patients in a timely manner, providing regular updates on patient progress and treatment plans, and ensuring your needs and concerns are thoroughly addressed.

**Mark Hoyer, MD****CLINICAL INTERESTS:**

Interventional cardiac catheterization
 Adults with congenital heart disease
 Nonsurgical treatment of heart defects
 Hybrid surgical/catheter procedures
 General pediatric cardiology

LOCATIONS: RH, MX**Sabena Hussain, MD****CLINICAL INTERESTS:**

Cardiac transplantation
 Heart failure
 General pediatric cardiology

LOCATIONS: RH, FH, MX**Amina Jaji, MD****CLINICAL INTEREST:**

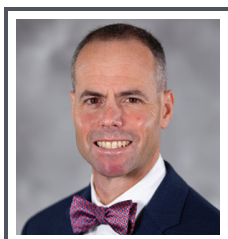
General pediatric cardiology

LOCATIONS: RH, MX, COL, LAF**Michael Johansen, DO****CLINICAL INTERESTS:**

Transthoracic and transesophageal
 echocardiography
 Pulmonary hypertension
 General pediatric cardiology

LOCATIONS: RH, MX**Tiffanie Johnson, MD****CLINICAL INTERESTS:**

Cardiac MRI
 Transthoracic and transesophageal
 echocardiography
 General pediatric cardiology

LOCATIONS: RH, MX**Adam Kean, MD****CLINICAL INTERESTS:**

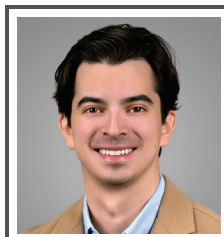
Electrophysiology
 Arrhythmias
 Pacemakers
 Cardiac ablation
 General pediatric cardiology

LOCATIONS: RH, DE, MX, FW**Abdul Khan, MD****CLINICAL INTEREST:**

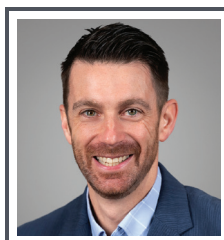
General pediatric cardiology

LOCATIONS: FW, MUN, RICH**Jacqueline Maiers, MD****CLINICAL INTERESTS:**

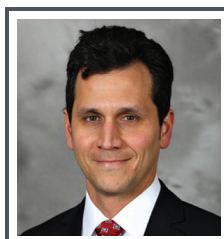
Transthoracic and fetal echocardiography
 Preventive pediatric cardiology
 General pediatric cardiology

LOCATIONS: RH, ROC-BL, MX**Felipe Murguia, MD****CLINICAL INTERESTS:**

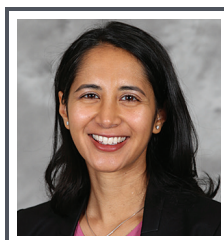
Single ventricle heart defects
 Fetal echocardiography
 General pediatric cardiology

LOCATIONS: RH, MX**John Parent, MD****CLINICAL INTERESTS:**

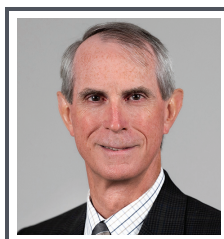
Transthoracic echocardiography
 Cardiac transplantation
 Heart failure
 General pediatric cardiology

LOCATIONS: RH, FH**Gabriel Paris, MD****CLINICAL INTERESTS:**

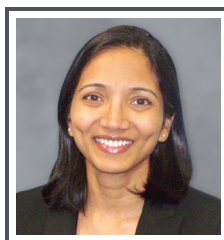
Exercise physiology and stress testing
 General pediatric cardiology

LOCATION: SB**Jyoti Patel, MD****CLINICAL INTERESTS:**

Cardiac MRI
 Transthoracic and transesophageal
 echocardiography
 General pediatric cardiology

LOCATIONS: RH, FH, MX**Ronald Payne, MD****CLINICAL INTERESTS:**

Cardiac developmental biology
 Heart failure in children
 Interventional cardiology
 General pediatric cardiology

LOCATIONS: RH, MX**Poonam Puranik, MD****CLINICAL INTERESTS:**

Transthoracic, transesophageal and
 fetal echocardiography
 General pediatric cardiology

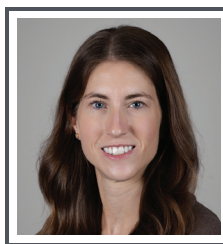
LOCATIONS: RH, FH, MX, ROC-BL

**Andrew Rodenbarger, MD****CLINICAL INTERESTS:**

Transthoracic, transesophageal and fetal echocardiography

General pediatric cardiology

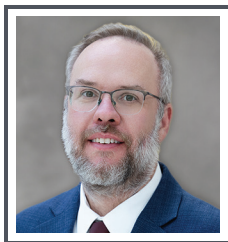
LOCATIONS: RH, FH, MX, APS

**Kaitlin Swanson, MD****CLINICAL INTERESTS:**

Interventional cardiac catheterization

General pediatric cardiology

LOCATIONS: RH, MX

**Michael Ross, MD****CLINICAL INTERESTS:**

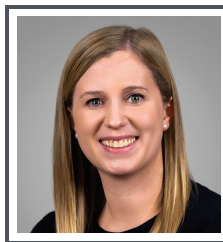
Interventional cardiac catheterization

Nonsurgical treatment of heart defects

Hybrid surgical/catheter procedures

General pediatric cardiology

LOCATIONS: RH, MX

**Jessica Thoe, MD****CLINICAL INTERESTS:**

Fetal echocardiography

Pulmonary hypertension

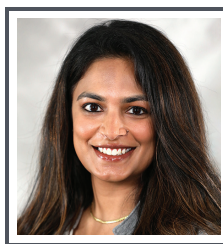
General pediatric cardiology

LOCATIONS: RH, MX

**Tamika Rozema, MD****CLINICAL INTEREST:**

General pediatric cardiology

LOCATIONS: FW, MUN, RICH

**Mira Trivedi, MD****CLINICAL INTERESTS:**

Transthoracic, transesophageal and fetal echocardiography

General pediatric cardiology

LOCATIONS: RH, MX, APS

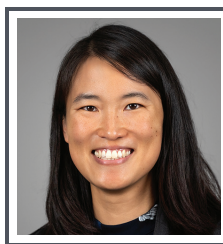
**Marcus Schamberger, MD****CLINICAL INTERESTS:**

Transthoracic, transesophageal and fetal echocardiography

Exercise physiology and stress testing

General pediatric cardiology

LOCATIONS: RH, MX

**Michele Tsai Owens, PhD, HSPP****CLINICAL INTEREST:**

Clinical child/pediatric psychology

LOCATIONS: RH, MX

**Laura Shopp, MD****CLINICAL INTERESTS:**

Transthoracic and fetal echocardiography

Preventive pediatric cardiology

General pediatric cardiology

LOCATIONS: RH, MX

**Megan Wilde, MD****CLINICAL INTERESTS:**

Cardiac transplantation

Heart failure

General pediatric cardiology

LOCATIONS: RH, FH

**Sarah Studyvin, DO, MPH, MHPE****CLINICAL INTERESTS:**

Adult congenital heart disease

General pediatric cardiology

LOCATIONS: RH, MX

ADVANCED PRACTICE PROVIDERS



Maddison Barley, NP

General pediatric cardiology

LOCATIONS: RH, MX



Amy DeHeer, NP

General pediatric cardiology

LOCATIONS: RH, MX



Nichole Gralia, NP

Heart failure program

General pediatric cardiology

LOCATION: RH



Jennifer Grossi, NP

Electrophysiology

Arrhythmias

Pacemakers

General pediatric cardiology

LOCATIONS: RH, MX



Dana Hartman, NP

General pediatric cardiology

Single ventricle

Home monitoring program

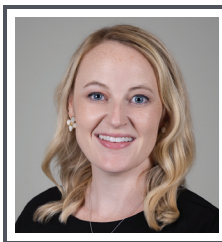
LOCATIONS: RH, MX



Kelly Howard, PA

General pediatric cardiology

LOCATIONS: RH, MX



Kelly Murray, PA

Cardiac catheterization

General pediatric cardiology

LOCATIONS: RH, MX



Emily Otter, NP

ACHD

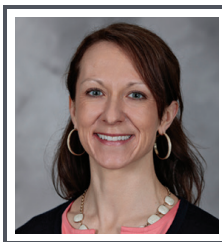
LOCATIONS: RH, MX



Lillie Ross, PA

General pediatric cardiology

LOCATIONS: RH, MX



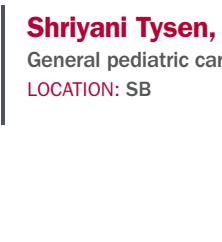
Lauren Sterrett, PA

Preventive cardiology

Adult congenital

General pediatric cardiology

LOCATIONS: RH, MX



Shriyani Tysen, NP

General pediatric cardiology

LOCATION: SB

Specialized programs

For more focused treatment, reach out to our team to discover how we can support your patient through one of our specialized programs. These are some, not all, of the multidisciplinary programs we offer.

Fetal cardiology

As collaborative partners in the Fetal Center, our fetal cardiologists offer in-depth diagnostic imaging, evaluation and consultation during pregnancy to develop comprehensive treatment plans.

Cardiovascular genetics

Our fully integrated CV genetics program provides testing, evaluation and consultation for the full spectrum of heritable heart conditions.

Preventive cardiology

Cardiologists, with expertise in preventive cardiology, diagnose and manage both inherited and acquired dyslipidemia and pediatric hypertension (arrange for ambulatory blood pressure monitoring); provide lifestyle modification guidance in collaboration with a specially trained dietitian.

Cardiac psychology

Our inpatient and outpatient cardiac psychology program offers assessment and psychotherapeutic intervention for patients coping with acute or chronic heart conditions, procedures and emergent events/trauma; assist with adolescents in developing self-management skills in preparation for role as an adult patient.

Home monitoring

An early adopter of cardiovascular home monitoring through the National Pediatric Quality Improvement Collaborative, Riley Children's is the only pediatric hospital in Indiana to offer this program, which has become a standard of care for babies with hypoplastic left heart syndrome (HLHS) or other complex physiology.

Cardiac rehabilitation

For patients who undergo heart surgery or a heart transplant, specialized rehabilitation is essential for long-term health and recovery. Riley Children's is home to Indiana's only comprehensive pediatric cardiac rehabilitation program. At Riley Children's, cardiac rehabilitation is a structured inpatient and outpatient program focused on exercise, education and support.



We understand how important it is to provide care that is close to home for patients, no matter where they live. Outpatient cardiology care is available at 12 locations throughout Indiana.

Locations:

- 1 Riley Hospital for Children (RH)**
705 Riley Hospital Drive | Indianapolis, IN 46202
- 2 Riley Pediatric Cardiology (COL)**
2325 E. 18th St., Suite 210 | Columbus, IN 47201
*Echocardiogram/EKG**
- 3 Deaconess Hospital (DE)**
4133 Gateway Blvd., Suite 220 | Newburgh, IN 47630
*Electrophysiology**
- 4 IU Health Greenbush Clinic (LAF)**
2600 Greenbush St. | Lafayette, IN 47904
- 5 Pediatric & Internal Medicine Center (RICH)**
1434 Chester Blvd. | Richmond, IN 47374
*Echocardiogram/EKG**
- 6 Pediatric Cardiology at Franciscan Health (FH)**
5255 E. Stop 11 Road, Suite 460 | Indianapolis, IN 46203
- 7 Riley Children's Health Specialty Care (FW)**
415 E. Cook Road, Suite 300 | Fort Wayne, IN 46825
*Electrophysiology, echocardiogram/EKG**
- 8 Riley Pediatric Cardiology – Meridian Crossing (MX)**
11590 N. Meridian St., Suite 300 | Carmel, IN 46032
*Adult congenital, electrophysiology/pacemaker, urgent/acute care, fetal echocardiogram, preventive cardiology, walk-in EKGs**
- 9 Riley Physicians Pediatric Cardiology – South Bend (SB)**
621 Memorial Drive, Suite 612 | South Bend, IN 46601
Scheduling: 574.232.3325 | Fax: 574.232.3358
*Echocardiogram/EKG, fetal echocardiogram**
- 10 Riley Outpatient Center – Bloomington (ROC-BL)**
4935 W. Arlington Road | Bloomington, IN 47404
*Fetal echocardiogram**
- 11 Riley Physicians Pediatrics (MUN)**
200 N. Tillotson Ave. | Muncie, IN 47304
*Echocardiogram/EKG**
- 12 UAP Downtown (APS)**
221 S. 16th St. | Terre Haute, IN 47807
*Fetal echocardiogram**

*Some unique services included

